

# WINEFILTER 5" Hollow Fiber Cartridges

*Hollow Fiber Crossflow Cartridges for Wine Filtration*

## PRODUCT DESCRIPTION

<b>Membrane Type:</b>	Microfiltration
<b>Membrane Material:</b>	Polysulfone
<b>Regulatory Status:</b>	Compliant with US FDA CFR Title 21, EC Reg. No. 1935/2004, and EU Reg. No. 10/2011.
<b>Housing Construction:</b>	Polysulfone shell and end caps
<b>Storage Solution:</b>	Glycerin

## SPECIFICATIONS

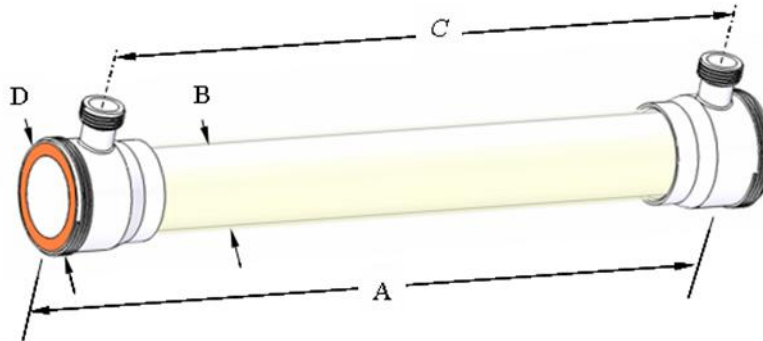
Model	Part Number	Active Membrane Area ft <sup>2</sup> (m <sup>2</sup> )	Fiber Inside Diameter mil (mm)
WINEFILTER 5043	0720290	85 (7.9)	54 (1.4)
WINEFILTER 5060	0720292	121 (11.2)	54 (1.4)

## OPERATING AND DESIGN INFORMATION\*

<b>Maximum Inlet Pressure:</b>	40 psi (2.8 bar)
<b>Maximum Transmembrane Pressure:</b>	25 psi (1.7 bar)
<b>Maximum Feed Side Pressure Drop:</b>	25 psi (1.7 bar)
<b>Maximum Backflush Pressure:</b>	20 psi (1.4 bar)
<b>Recommended Backflush Interval:</b>	15 to 30 minutes
<b>Maximum Operating Temperature:</b>	104°F (40°C) @ pH 6
<b>Maximum Cleaning Temperature:</b>	140°F (60°C)
<b>Allowable pH (Cleaning):</b>	1.5 – 13.0 @ 104° F (40°C)

\*Consult KSS Process Technology Group for specific information.

## NOMINAL DIMENSIONS



Model	A		B		C		D		Permeate Connection	Process Connection
	inches	mm	inches	mm	inches	mm	inches	mm		
WINEFILTER 5043	43	1,092	5.0	127	38 %	981	6.0	152	1 ½" NPSM	6" NPSM
WINEFILTER 5060	60	1,524	5.0	127	55 %	1,413	6.0	152	1 ½" NPSM	6" NPSM

## OPERATING GUIDELINES

## 5" HOLLOW FIBER CARTRIDGE HARDWARE

Item	Description	KPN
1	5" HF Cartridge	
2	Process Cap Nut	0040364
3	Cartridge Gasket Silicon	0211095
4	Cartridge Reducing Elbow	0040365
5	Cartridge Straight Adapter (threaded)	0040376
6	Manifold Gasket	EPDM 0090439 BUNA 0090432
7	Cartridge Backup Ring	0040368
8	Manifold Cap Nut	0040367
9	Permeate Port Gasket	0090448
10	Permeate Plug	0040375
11	Permeate Adapter Sanitary	0211787
12	Permeate Cap Nut (for part 17)	0040377

## Lubricants

For cartridge installation, use only water or glycerin to lubricate seals. The use of petroleum or vegetable-based oils or solvents may damage the cartridge and will void the warranty.

## Exposure to Chemical Oxidants:

Exposure to chemical oxidants for thorough cleaning and sanitization may prove necessary and useful.

- Chemical oxidants commonly used in food applications include peracetic acid blends, hydrogen peroxide, and sodium hypochlorite. Please consult KMS for recommended addition rates, frequency of use, and tolerance.
- Potassium metabisulfite (without catalyst such as cobalt) is the preferred chemical to eliminate residual chlorine or similar oxidizers prior to processing the feed stream.

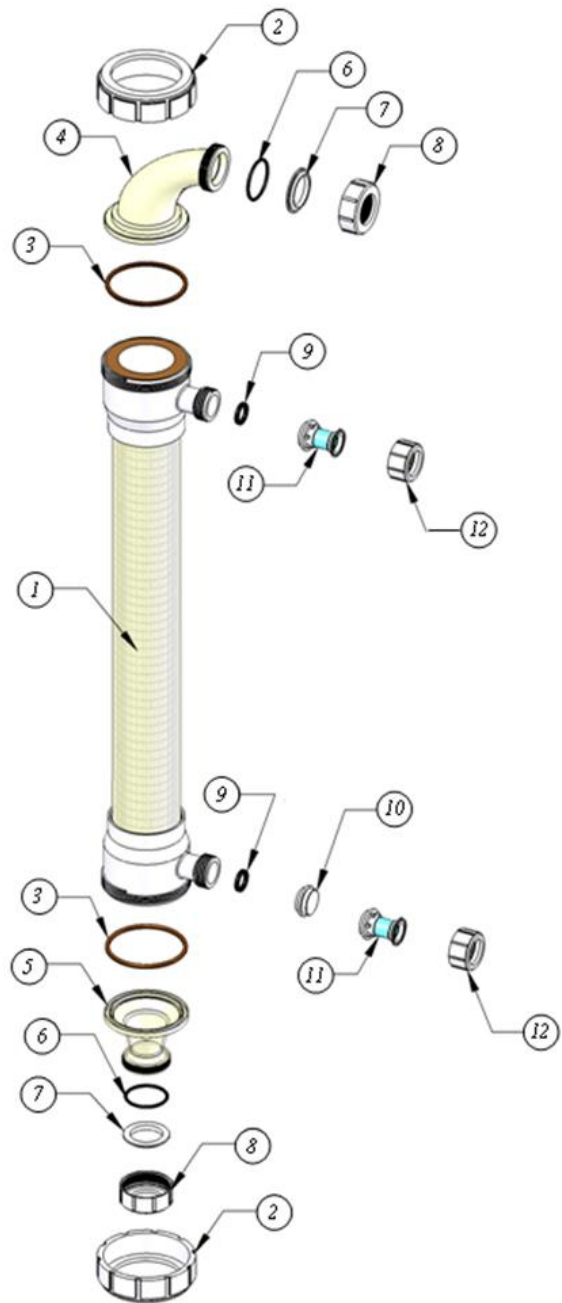
## KSS Capability

KSS is the leader in crossflow membrane technology, manufacturing reverse osmosis, nanofiltration, microfiltration, and ultrafiltration membranes and membrane systems. The industries served include food, dairy and beverage, pharmaceutical, biotechnology, water and wastewater, semiconductors, automotive, chemical and general manufacturing. KSS adds value by providing top quality membrane products and by sharing its experience in the design and supply of thousands of crossflow membrane systems worldwide.

## Service and Ongoing Technical Support

KSS has an experienced staff of professionals available to assist end-users and OEMs for optimization of existing

systems and support the development of new applications. Along with the availability of supplemental technical bulletins, KSS also offers a complete line of cleaning chemicals and can assist optimizing your cleaning regime.



*The information contained in this publication is believed to be accurate and reliable, but is not to be construed as implying any warranty or guarantee of performance. We assume no responsibility, obligation or liability for results obtained or damages incurred through the application of the information contained herein. Refer to Standard Terms and Conditions of Sale and Performance Warranty documentation for additional information*

**KOVALUS SEPARATION SOLUTIONS™, LLC.** 850 Main Street, Wilmington, MA 01887

Main: +1-978-694-7000 • Toll Free: +1-888-677-5624

For complete contact information and listing of our global locations, visit [www.kovalus.com](http://www.kovalus.com)

©2023 KOVALUS SEPARATION SOLUTIONS™, LLC. All rights reserved worldwide. For related patent and trademark information, visit [www.kovalus.com/legal](http://www.kovalus.com/legal).