

ASPIDA 8081 Hollow Fiber Cartridge

8-inch Ultrafiltration Cartridge for Water and Wastewater Filtration

PRODUCT DESCRIPTION

Membrane Chemistry:	Proprietary PVDF
Membrane Type:	Hollow fiber Ultrafiltration
Flow Direction:	Outside - In
Nominal Pore Size:	0.03 µm
Outside Fiber Diameter:	0.05 inch (1.3 mm)
Housing Shell:	UPVC
Potting Material:	Proprietary Epoxy Compound
Storage Solution:	Calcium chloride/Glycerin

PRODUCT SPECIFICATIONS

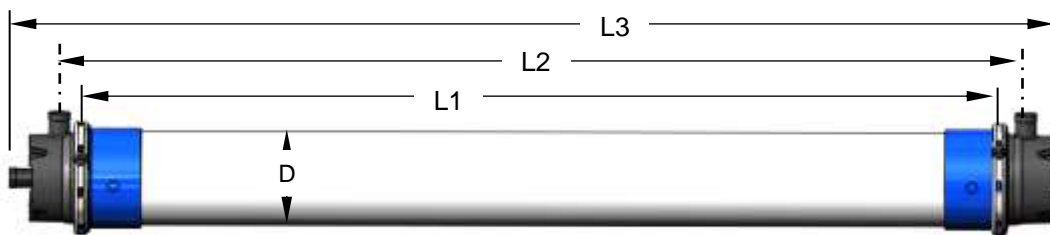
Part Number	Model	Membrane Area [ft ² (m ²)]	Typical Production Range [gpm (m ³ /hr)]
0723101	ASPIDA 8081	872 (81)	14 - 43 (3.25 – 9.75)

OPERATING AND DESIGN INFORMATION*

Maximum Pressure (water):	58 psi (4.0 bar) @ 104° F (40° C) or less
Temperature Range:	32° F (0° C) - 104° F (40° C)
Maximum Production Transmembrane Pressure:	36 psi (2.5 bar)
Maximum Backflush Transmembrane Pressure:	36 psi (2.5 bar)
Allowable pH Range (continuous operation):	2 - 11
Allowable pH Range (short term):	1.5 – 12.5
Maximum Total Chlorine @ 77° F (25° C) or lower:	3,000 ppm @ pH <12
Typical Air Scour Rate per Cartridge:	4 scfm (7 Nm ³ /hr)
Maximum Air Scour Rate per Cartridge:	7 scfm (12 Nm ³ /hr)
Typical Backflush Flow Rate per Cartridge:	28.5 gpm (6.5 m ³ /hr)

*Consult KSS Process Engineering Group for specific applications

NOMINAL DIMENSIONS



Model	D		L1		L2		L3	
	inches	mm	inches	mm	inches	mm	inches	mm
ASPIDA 8081	8.9	225	80	2,030	85	2,160	91 5/8	2,328

* Dimensions are provided for reference only and should not be interpreted as accurate specifications.

STORAGE GUIDELINES

Cartridge Storage Conditions:

New cartridges are packaged in a 30% Calcium chloride / 5% Glycerin / water solution. The glycerin/water solution should be removed from new cartridges before their initial use with a water rinse. See the pre-startup cleaning instruction sheet packed with each cartridge shipment for more details. Prior to installation, cartridges should be stored in their original packaging under the following conditions:

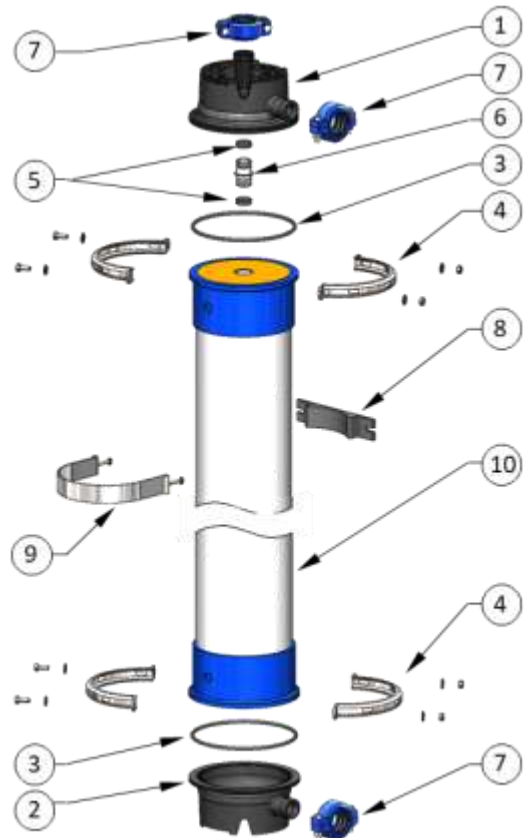
- Indoors, out of direct sunlight.
- Temperatures between 50 - 85°F (10 - 30°C).
- Relative humidity below 70%.
- In a horizontal position (unless shipped as fully loaded crate).

It is best to use new cartridges within one year of shipment. Consult KSS for recommendations for longer term storage.

Used cartridges should be cleaned, rinsed, and impregnated before storage using a solution of 30% Calcium chloride / 5% Glycerin / water. New cartridge storage conditions should also be used for used cartridges. Used cartridges must be drained, rinsed, and cleaned after storage per the pre-startup cleaning instruction sheet.

CARTRIDGE ASSEMBLY AND COMPONENTS

Item	Description	Quantity Required
1	Permeate side End Cap	1 each
2	Feed side End Cap	1 each
3	End Cap O-Ring	2 each
4	Clamp	2 each
5	Connector O-Rings	4 each
6	Connector	1 each
7	Coupling	3 each
8	Cartridge Saddle	1 each
9	Cartridge Clamp	1 each
10	ASPIDA UF Cartridge	1 each



Cartridge Weight and Hold Up Volume:

Cartridge shipping weight:	275 lbs (125 kg)
Cartridge weight, full of water:	220 lbs (100 kg)
Cartridge empty weight:	100 lbs (45 kg)
Hold up volume:	14.5 gallons (55 Liters)

The information contained in this publication is believed to be accurate and reliable, but is not to be construed as implying any warranty or guarantee of performance. We assume no responsibility, obligation or liability for results obtained or damages incurred through the application of the information contained herein. Refer to Standard Terms and Conditions of Sale and Performance Warranty documentation for additional information

KOVALUS SEPARATION SOLUTIONS™, LLC. 850 Main Street, Wilmington, MA 01887

Main: +1-978-694-7000 • Toll Free: +1-888-677-5624

For complete contact information and listing of our global locations, visit www.kovalus.com

©2023 KOVALUS SEPARATION SOLUTIONS™, LLC. All rights reserved worldwide. For related patent and trademark information, visit www.kovalus.com/legal.